

# DeLaval Lamb & Kid Feeder LKF1200

## Save hours every day



# DeLaval Lamb & Kid Feeder LKF1200

Saves you hours every day, as it frees you from the time-consuming task of hand-feeding

Automatic lamb and kid feeders are extremely cost-efficient and affordable. With only one station, it is possible to feed up to 240 lambs or kids both reliably and safely.

The stations are robust and all the components have a proven track record over many years.

The stations are adaptable to many conditions and can be adjusted to suit young animals' individual needs.

## Overview of product features

### Control

- Direct function keys for all the important functions.
- Segmented display.
- Supports the electronic heating control plus the electrode control in the mixer jar.

### Design

- Compact, robust and easy to clean.
- Easy to transport.
- Fly protection door (standard).

### High efficiency

- In the 3-phase station there are up to 8 feeding places/teats.
- Up to 5 kW heating capacity.
- Boiler with electronic heating control and temperature sensor.

### Easy to clean and service-friendly

- Semi-automatic cleaning process with increased cleaning temperature.
- Cleaning system for the suction hoses.
- Easy to maintain.

### Height-adjustable front plate with teat bracket (optional)

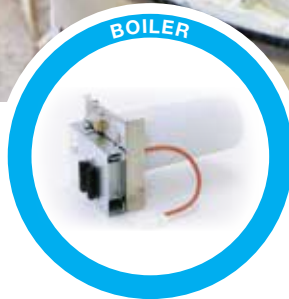
- The variable teat position offers the possibility of an individual and age-based assembly.
- The height adjustment allows for flexible mounting under different barn conditions.



DeLaval Lamb & Kid Feeder LKF1200 - Specifications	
Powder tank capacity	35 kg
Heat output	3.2kW (230-240V), 5.0kW (400-410V)
Feed preparation	2.5 to 3 l/min
Feeding station	max. 8 teats
No. of lambs/kids	20 to 30/feeding station
Height, basic configuration	114 cm
Width, Depth, Weight	58 cm, 52 cm, approx 34 kg



The feeder helps you work even more efficiently and is affordable.



### Ad-lib

Milk substitute is fed ad-lib to the young animals through a sucking teat. Small quantities of the milk are prepared, as required, by the station so that portions are fresh and hot. The boiler enables water to remain at a constant, selected temperature and the built-in powder dispenser is able to accurately measure many types of milk powder.

### How many animals?

Each 3-phase station is able to handle up to 240 young animals or 20-30 per feeding place/teat with 8 teats per station.

Single phase stations are able to handle up to 180 young animals on up to 6 feeding places/teats.

### Ease of operation

The automatic feeder has a compact control unit that is easy to operate with its 7-segment display. A full instruction book is available and the function menu is clearly laid out. Water and milk powder portion size can be configured separately and a portion counter allows the user to monitor volumes of feed being dispensed.

### Temperature reliability

The boiler is fully configurable to ensure feed is always at the correct temperature; it has a built in temperature sensor with a minimum temperature monitor plus an electronic heating regulator.

An extra mixer heating unit is optional for each station, this keeps milk mixed and warm over a longer period of time so that young animals are not exposed to cooled milk.

### Ease of cleaning

The station is equipped with an efficient and easy to operate cleaning system. High temperature water is available at the push of a button. The mixer jar is easy to access as it tilts and a hose-cleaning gun is supplied that enables deposits to be removed from the suction hoses.

### Teat positioning

The optional front plate is height adjustable and allows for a variable teat position, this assists in training of young animals and for older animals when mounted on the suction bracket, this is beneficial.

### Fly protection

A fly screen door is included as standard, this prevents flies from entering the mixer jar, and is an added Health & Safety feature. The screen is made from steel gauze so that the steam generated in the jar can escape through the pores, preventing condensation build-up.

*We live milk*

**delaval.com**

**DeLaval Ltd**

PO Box 10241

307 Sandwich Road, Saint Andrews  
Hamilton, New Zealand

**0800 222 228**

**DeLaval Pty Ltd**

PO Box 1410

1 Global Drive, Westmeadows  
Victoria, Australia

**1800 817 199**

**Your Local DeLaval Dealer:**